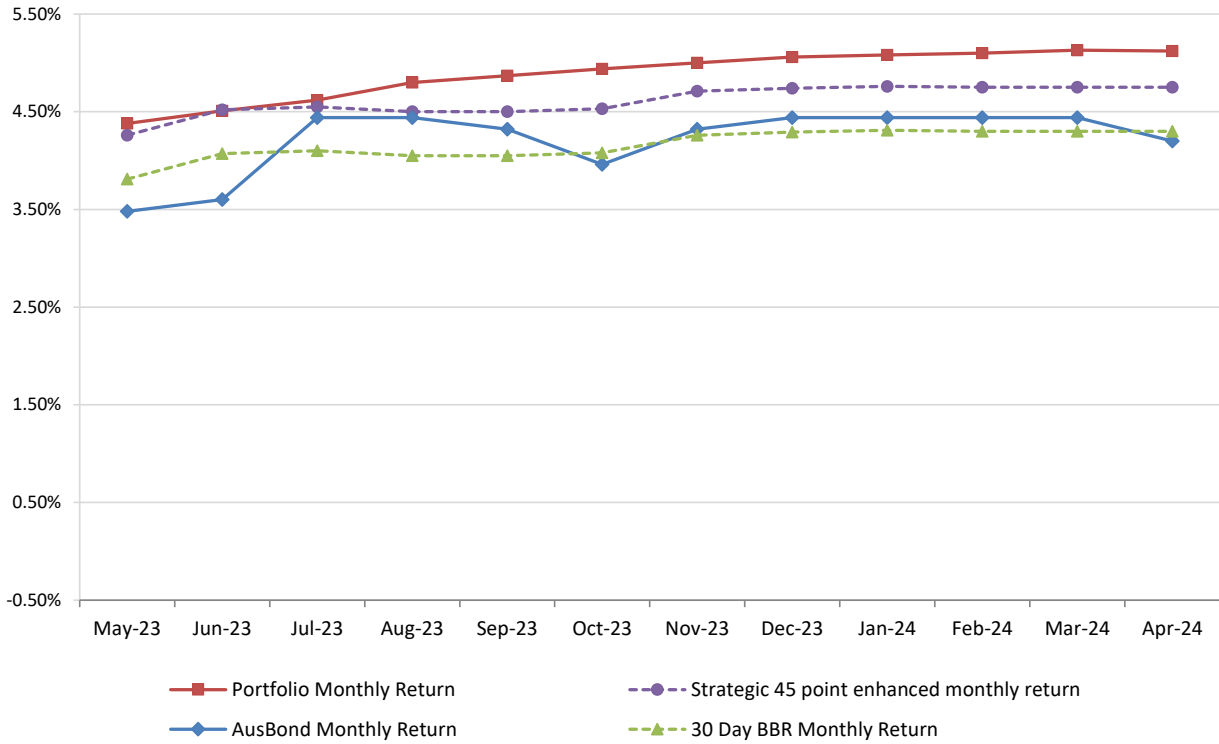


# **Attachment B**

**Investment Performance  
as at 30 April 2024**

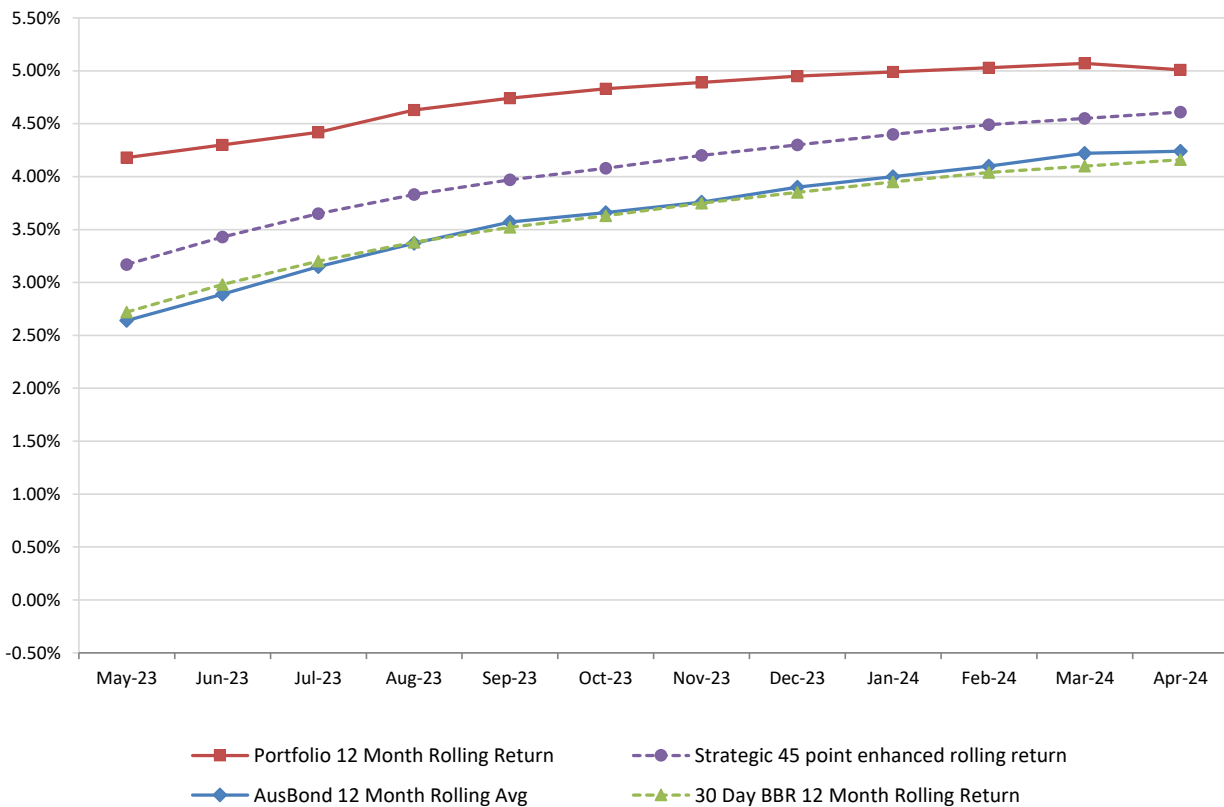
### Monthly Results

**Actual Portfolio vs Strategic Enhanced Benchmark vs AusBond Benchmark vs 30 Day BBR Benchmark**  
April 2024

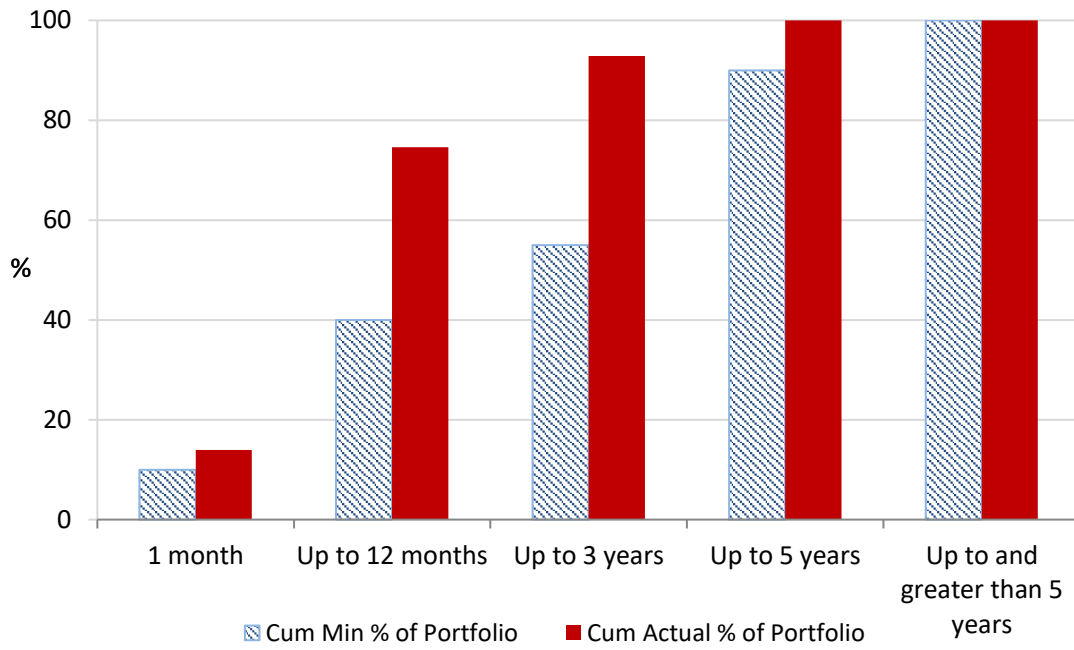


### 12 Month Rolling Averages

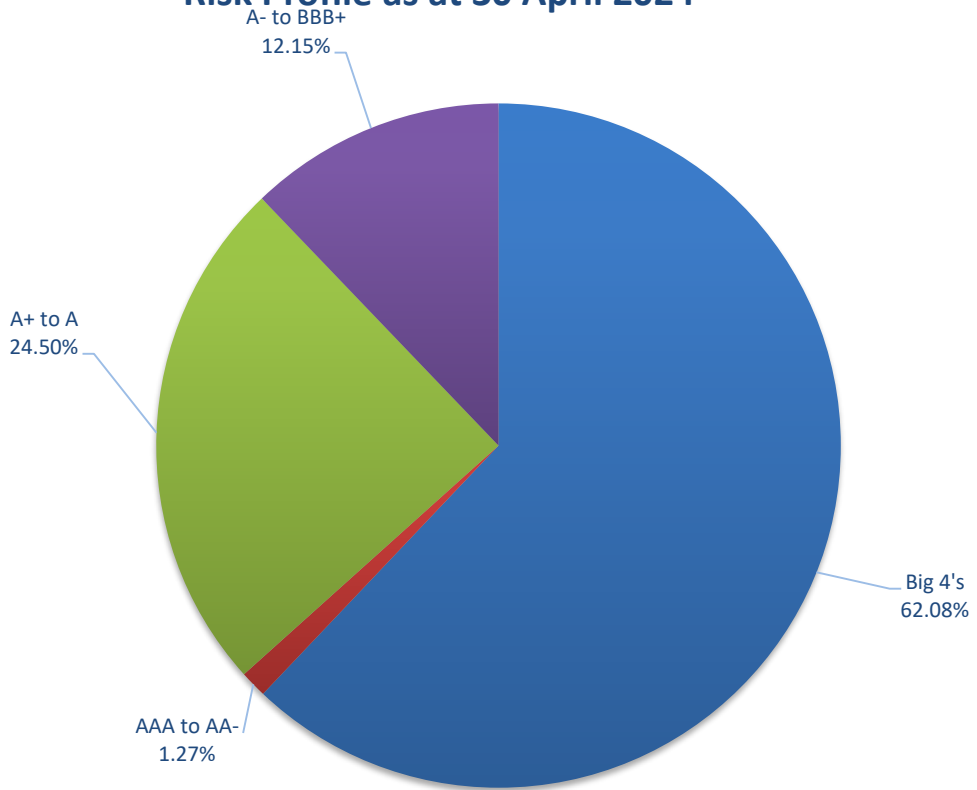
**Actual Portfolio vs Strategic Enhanced Benchmark vs AusBond Benchmark vs 30 Day BBR Benchmark**  
April 2024



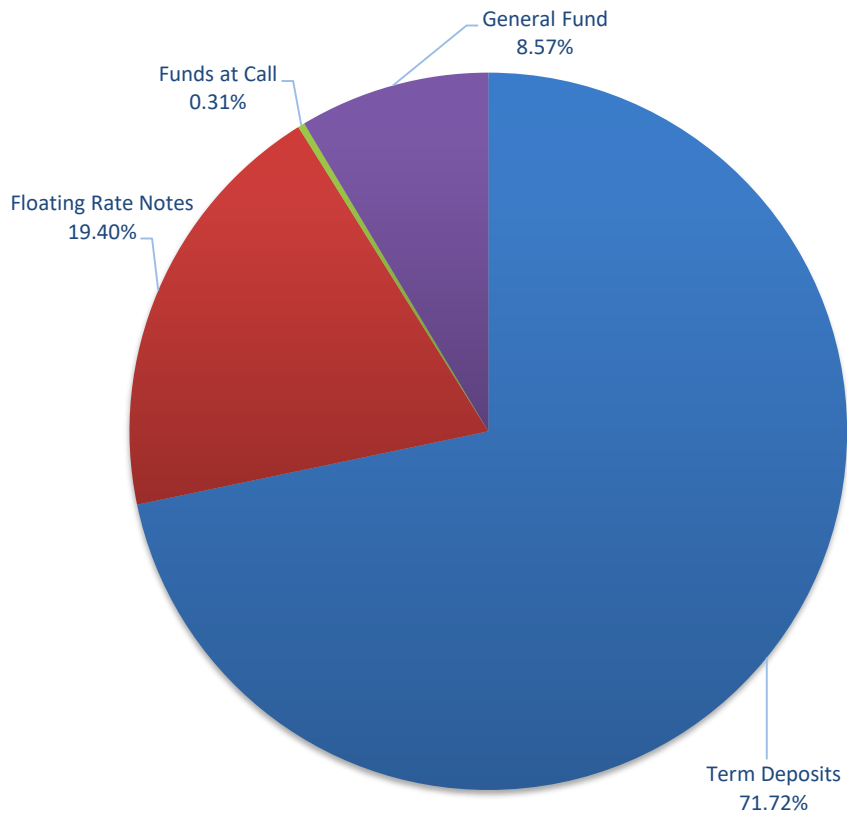
### Portfolio Liquidity - Minimum Allocations as at 30 April 2024



### Risk Profile as at 30 April 2024



### Risk Profile as at 30 April 2024



INVESTMENT AND CASH DISTRIBUTION BY FINANCIAL INSTITUTION				
as at 30 April 2024				
Institution Category	Financial Institution	Amount \$M	Financial Inst. %	Institution Cat. %
Australian Big 4 Bank (and related institutions)	ANZ Bank	23.0	2.9	
	Commonwealth Bank	118.7	15.1	
	National Australia Bank	88.9	11.3	
	Westpac Banking Corporation	258.4	32.8	
<b>Big 4 Total</b>		<b>489.0</b>		<b>62.1</b>
Other Australian ADIs and Australian subsidiaries of foreign institutions	Bank Australia Limited	9.5	1.2	
	Bank of Queensland	18.0	2.3	
	Bendigo & Adelaide Bank	54.5	6.9	
	Great Southern Bank (formerly Credit Union Australia)	6.5	0.8	
	ING Bank	96.5	12.2	
	Suncorp Bank	82.5	10.5	
	Macquarie Bank Ltd	14.0	1.8	
	Northern Territory Treasury Corporation	10.0	1.3	
Newcastle Greater Mutual Group Ltd	7.3	0.9		
<b>Other ADI Total</b>		<b>298.8</b>		<b>37.9</b>
<b>Grand Total</b>		<b>787.8</b>	<b>100.0</b>	<b>100.0</b>